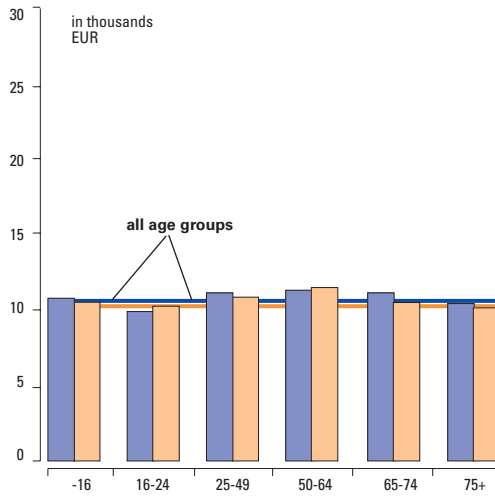
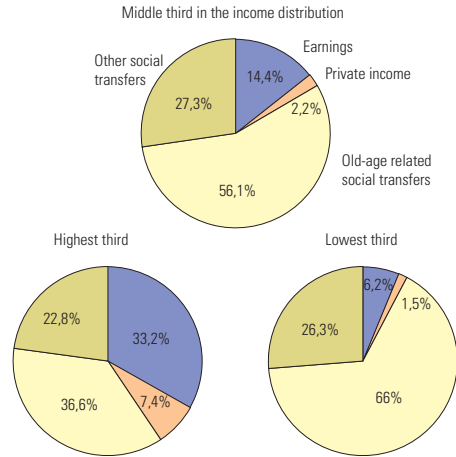




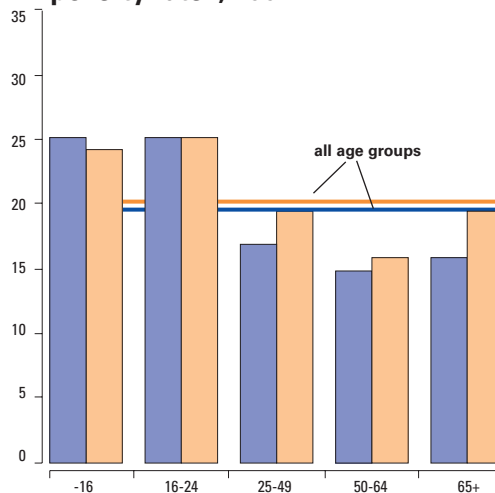
Mean equivalised income



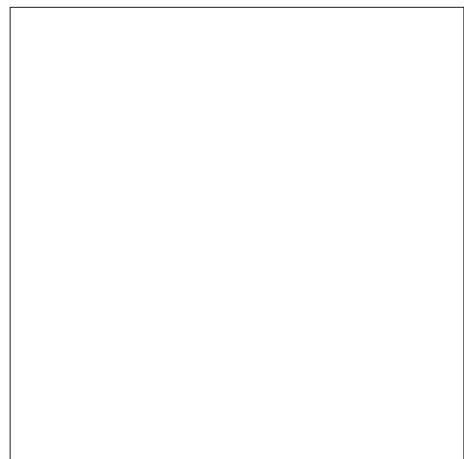
Income composition for the population aged 65+, 2000



Relative income poverty rate*, 2002



Individual wealth at time of retirement



Minimum income protection for older persons

i) Minimum income schemes for elder persons:

	Non contributory	Contributory	
		Old-age	Survivors
Designation	Social pension („Assegno sociale“)	Minimum pension	Minimum pension
Principle	Means-tested non contributive benefit (age & residence conditions)		
Main conditions of eligibility	Beneficiary must be > 65 years, with income (not incl. rents) <€4784 if single, <€9567.22 if married.	The old-age pension is brought up to the amount of the min. pension if the annual taxable income of the pensioner is less than 2 times the minimum pension (4 times if married). The supplement amounts from 40% to 70% Person insured after 1.1.1996: no minimum pension.	
Amount payable	€4783.61 per year, with annual increase	Annual amount of min. pension: €5384.34	Monthly min. pension: €412.8

Sources:
 Mean equivalised income: EUROSTAT (2004), Newcronos Database
 Income composition: ECHP
 Relative income poverty rate: EUROSTAT (2004), Newcronos Database
 * at 60% median threshold
 Minimum income protection: MISSOC (2004)