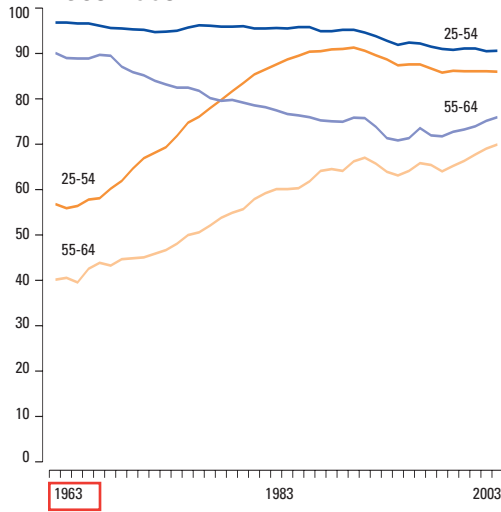
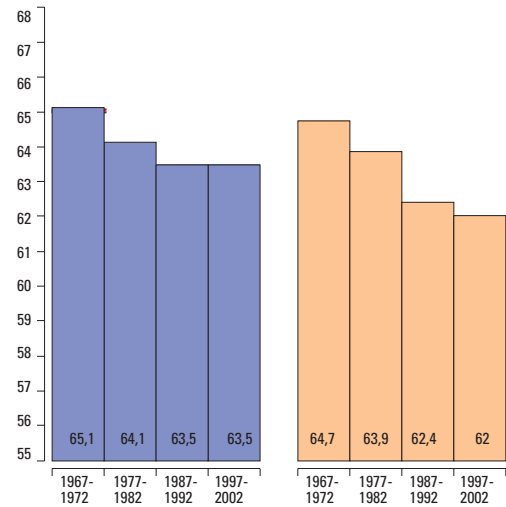




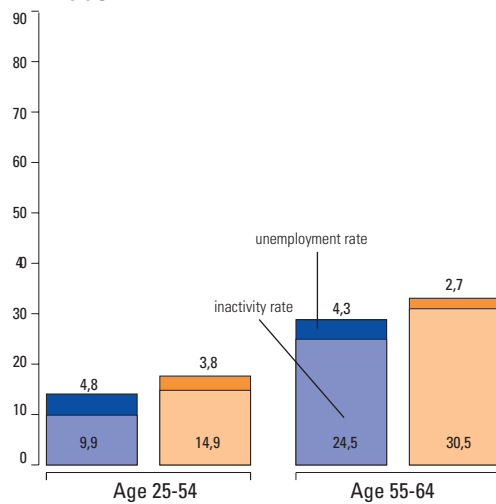
## Labour force participation rates 1963-2003



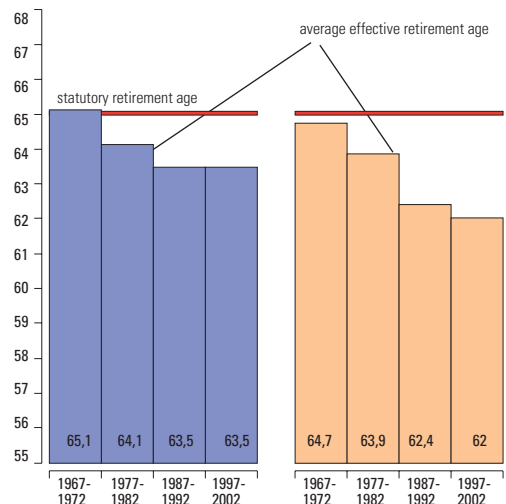
## Average effective retirement age



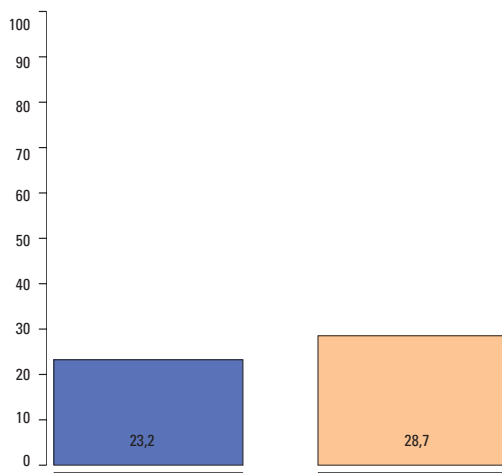
## Inactivity and unemployment rates, 2003



## Early retirement 1\*



## Early retirement 2\*\*



## Employment of older workers and flexible retirement corridors

i) Since 2000, a subsidy corresponding to 75% of the salary is paid for two years to a company hiring someone over 57 and unemployed for two years

Sources:  
 Labour force participation rates: OECD Labour Market Indicators  
 Average effective retirement age: Scherer (2001), Age of withdrawal from the labour market in OECD countries, and OECD (2005), Society at a Glance  
 Inactivity and unemployment rates: OECD Labour Market Statistics  
 Early retirement 1: Scherer (2001), Age of withdrawal from the labour market in OECD countries, and OECD (2005), Society at a Glance  
 \*Difference between the average effective retirement age and the statutory retirement age  
 Early retirement 2: ECHP  
 \*\* Retired persons aged between 55 and the official retirement age (65) as % of the relative population subgroup  
 Employment of older workers and flexible retirement corridors: Sigg (2004)