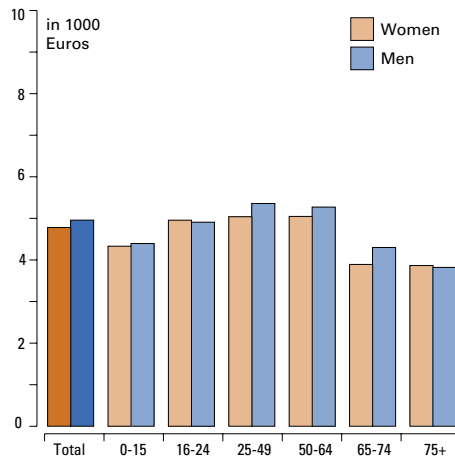


Czech Republic



Income and Wealth

Average Disposable Income*, 2004



*Mean equivalised net household income

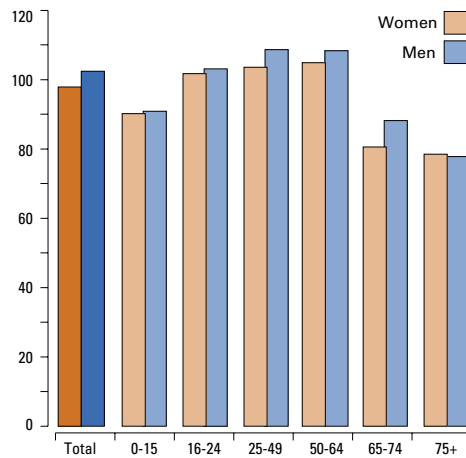
Sources:

Average Income, Relative Income, S80/S20, Income Composition: Czech Statistical Office
Poverty Rate: EUROSTAT, Income and Living Conditions Indicators, 2006, Update 2004 by Czech Statistical Office

Notes:

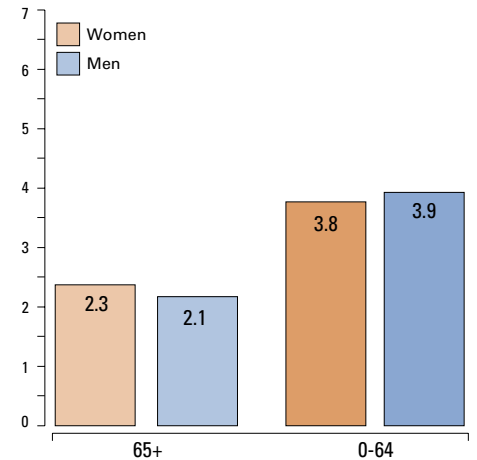
We refer from now onwards to disposable household income equivalised using the OECD modified equivalence scale

Relative Disposable Income*, 2004



*Median net income by age group and gender compared to total population

S80/S20 Ratio of disposable Income, 2004



Indicators



Demographic Indicators



Income and Wealth

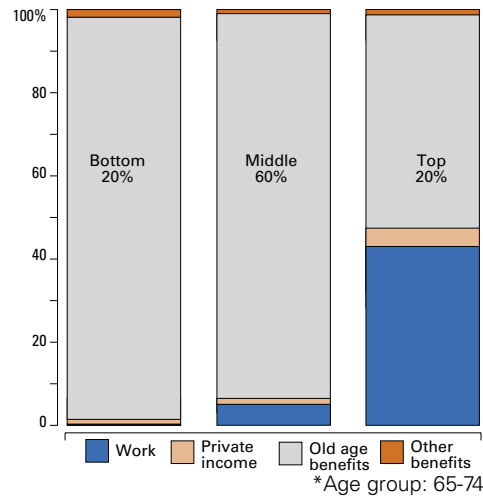


Labour Market and Labour Market Participation

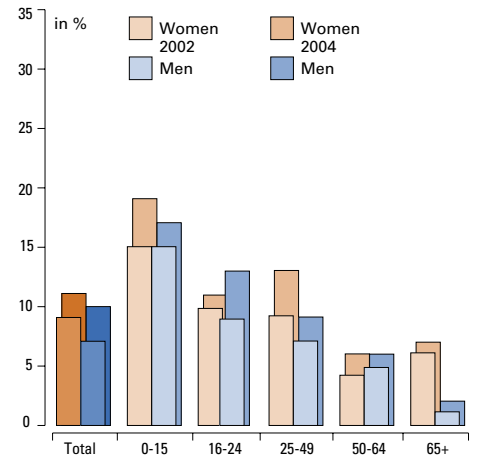


Social Protection and Financial Sustainability

Income Composition, by Income Groups*, 2004

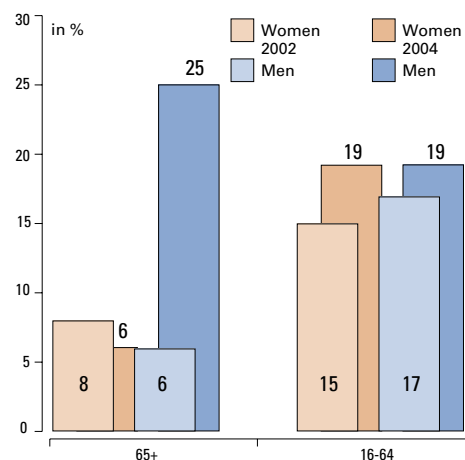


Relative Income Poverty Rate, 2002-2004





Median Income Poverty Gap*, 2002-2004



*at 60% median threshold,
Men 65+: very small number of observations

Persistent Income Poverty Rate*

n.a.

*3 years poor out of 4

Sources:

Poverty Gap: EUROSTAT, Income and Living Conditions Indicators, 2006, Update 2004 by the Czech Statistical Office

Institutional Features: MISSOC, Social protection systems in the Member states and the European Economic Area (2006);

National source

Minimum Income Protection: Czech Statistical Office

Institutional Features of the Minimum Income Guarantee for older People, 2006

Minimum pension:

Basic Amount: Flat-rate of CZK 1,470 (€ 51) per month.

Percentage Amount : CZK 770 (€ 27) per month.

Non contributory Minima:

No special scheme

Number of claimants of minimum income guarantee:

0.07 % of the population 65+ (drawing the old-age pension)

Minimum Income Protection Level as % of

n.a.

Per Capita Expenditure on Minimum Income Protection Schemes

n.a.

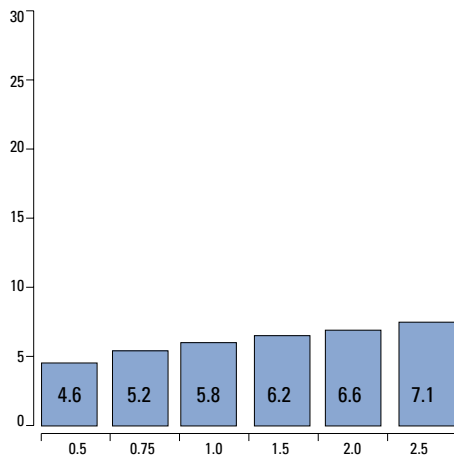


Czech Republic

Composition of Wealth Holdings by Components

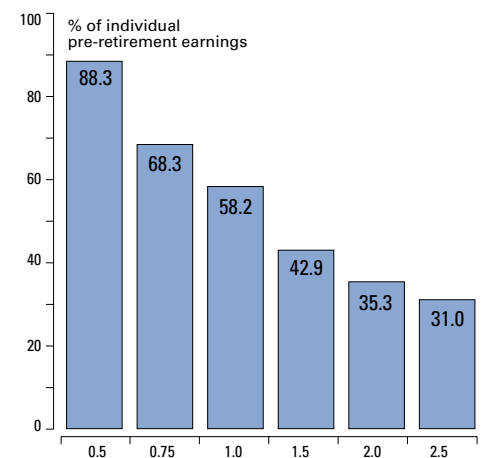
Sources:
Pension Wealth, Replacement Rates:
OECD, Pensions at a Glance (2005)

Gross Pension Wealth (Men)*, 2005



*By earnings level: multiple of national average earnings

Net Replacement Rates, 2005



*By earnings level: multiple of national average earnings