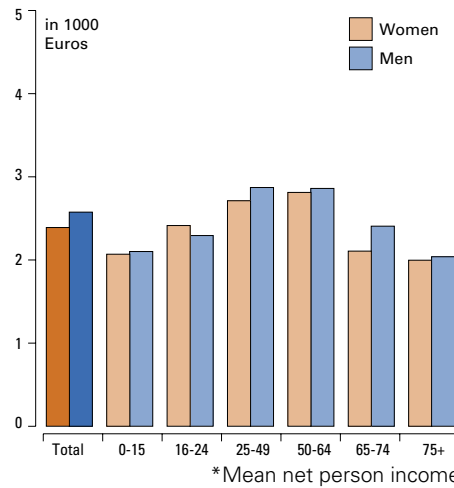


# Switzerland



Income and Wealth

## Average Disposable Income\*, 2004



© European Centre, Vienna

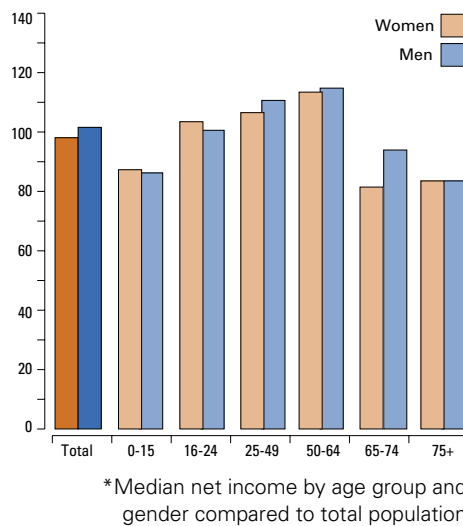
Sources:

Average Income, Relative Income, Income Composition, S20/S80 Share, Poverty Rate: IES, Income and Expenditures Survey, 2004

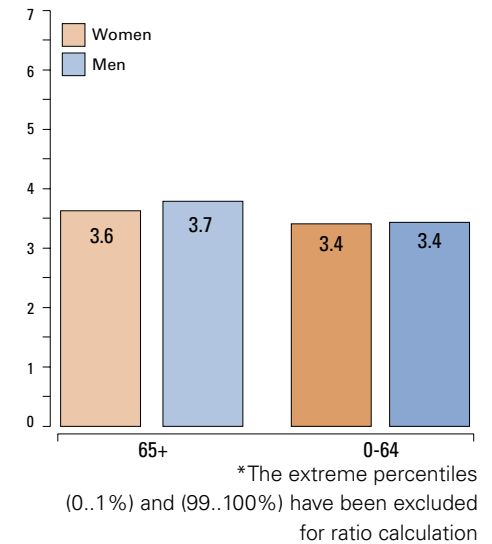
Notes:

We refer from now on to values that have been calculated based on the person distribution (not the household distribution)

## Relative Disposable Income\*, 2004



## S80/S20 Ratio of disposable Income\*, 2004



## Indicators



Demographic Indicators



Income and Wealth

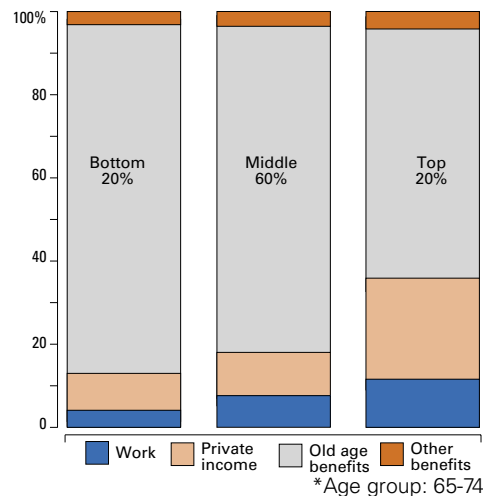


Labour Market and Labour Market Participation

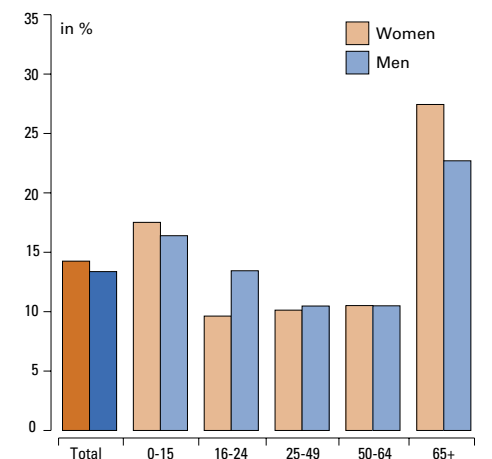


Social Protection and Financial Sustainability

## Income Composition, by Income Groups\*, 2004

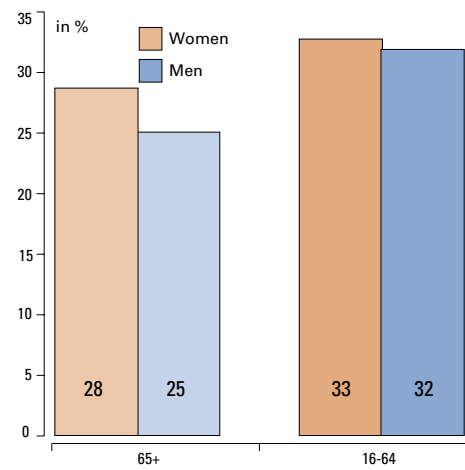


## Relative Income Poverty Rate, 2004





## Median Income Poverty Gap\*, 2004



\*at 60% median threshold

## Persistent Income Poverty Rate\*,

n.a.

\*3 years poor out of 4

### Sources

*Poverty Gap:* IES, Income and Expenditures Survey, 2004

*Institutional Features:* MISSOC, Social protection systems in the Member states and the European Economic Area (2006); National source

## Institutional Features of the Minimum Income Guarantee for older People

### Minimum pension:

1st pillar (basic scheme): Complete pensions: CHF 1,075 (€ 692) per month.

Child pension: CHF 430 (€ 277) per month.

2nd pillar (statutory minimum); No statutory minimum pension.

### Non contributory Minima:

Main conditions of eligibility and amount payable:

Must be domiciled and permanently resident in Switzerland.

Foreigners: in addition, must have lived in Switzerland for the 10 years (refugees and stateless persons: 5 years) immediately preceding the date on which they apply for supplementary benefits, without interruption.

The annual amount of the supplementary benefits corresponds to the excess of recognised expenses over the determining income.

Maximum annual amount of the supplementary benefits:

- For persons living at home: CHF 51,600 (€ 33,213);
- for persons living in an institution: CHF 30,870 (€ 19,870).

## Minimum Income Level as % of

n.a.

## Number of Claimants of Minimum Income Guarantee\*

n.a.

## Per Capita Expenditure on Minimum Income Protection Schemes

n.a.

\*In % of the population 60+



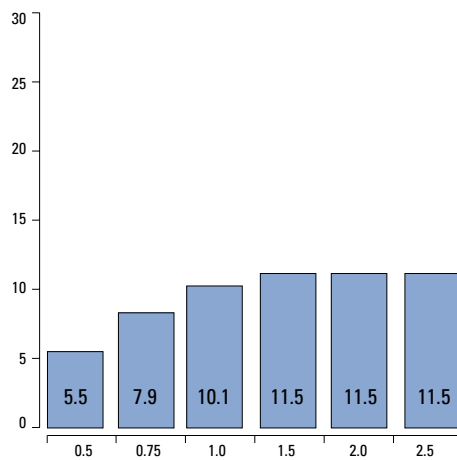
# Switzerland

## Composition of Wealth Holdings by Components

n.a.

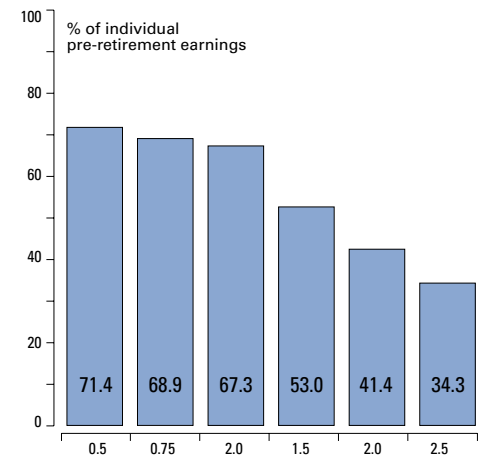
Sources:  
*Pension Wealth, Replacement Rates:*  
OECD, Pensions at a Glance (2005)

### Gross Pension Wealth



\*By earnings level: multiple of national average earnings

### Net Replacement Rates



\*By earnings level: multiple of national average earnings



EUROPEAN CENTRE  
FOR SOCIAL WELFARE POLICY AND RESEARCH  
AFFILIATED TO THE UNITED NATIONS